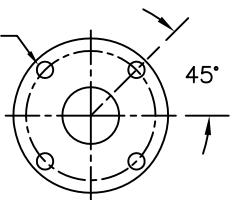


NO.	PART NAME	MATERIAL
1	VENT VALVE	GLASS-FILLED PPL
2	COVER	GLASS-FILLED PPL
3	BODY	GLASS-FILLED PPL
4	CARTRIDGE (5)	AS SPECIFIED
5	DRAIN PLUG	GLASS-FILLED PPL
6	O-RING	VITON

NOTES:

1. PRESSURE RATING: 150 PSI @ 70° F (NON SHOCK) (10.3 BAR @ 21° C)
2. VENT GAUGE AND DIFFERENTIAL PRESSURE GAUGE ARE OPTIONAL.
3. PIPING CONNECTION (NOM.): 2" NPT (50MM)
DRAIN CONNECTION (NOM.): 2" NPT (50MM)
4. FOR METAL PIPING INSTALLATION, A MINIMUM OF 20" PLASTIC PIPE IS REQUIRED ON UPSTREAM AND DOWNSTREAM OF FILTER VESSEL.
5. CARTRIDGE ADAPTER KIT, PART NO.: MFLT20/30 ARE SOLD SEPARATELY.

(4) 0.88 DIA. (22 MM)
ON 7.50" (191 MM)
DIA. BOLT CIRCLE



CERTIFIED FOR:

P.O. NO.:

REG. NO.:

QUOTE NO.:

TAG NO.:

PART NO.	A		B		C		D		E		F		G		H		WT. (DRY)	
	IN.	MM.	IN.	MM.	IN.	MM.	IN.	MM.	IN.	MM.	IN.	MM.	IN.	MM.	IN.	MM.	LBS.	KG.
CFLT4203	6.50	/ 165	10	/ 254	3.25	/ 83	38.12	/ 968	25	/ 635	18.38	/ 467	6.13	/ 156	27.88	/ 708	50	/ 22.7
CFLT4202	6.50	/ 165	10	/ 254	3.25	/ 83	50.12	/ 1273	36	/ 914	18.38	/ 467	6.13	/ 156	39.88	/ 1013	65	/ 29.5

PART NO.	CARTRIDGE SIZE (5/FILTER)
CFLT4203	20"
CFLT4202	30"

		EATON FILTRATION, LLC 44 APPLE ST. TINTON FALLS, NEW JERSEY 07724 U.S.A.					
		NAME POLYLINE MULTI-CARTRIDGE FILTER NPT THREADED CONNECTION SIZE 2" POLYPROPYLENE					
DRAWN	FM	DATE	3/24/98	CERT.	LF	DATE	3/24/98
SIZE	DWG NO	SD021300				REV	B

UNAUTHORIZED USE, MANUFACTURE OR REPRODUCTION IN WHOLE OR IN PART IS PROHIBITED. DRAWING, DESIGN AND OTHER DISCLOSURES PROPERTY OF EATON FILTRATION, LLC

ELECTRONIC FILE NAME: SD021300

REF. ECR A077 DATE 12/14/01